



---

ShenZhen Maizhan Technology Co., Ltd.  
Focused Wireless Charging

*Shenzhen Maizhan Technology Co., Ltd*

# *Product Catalog*

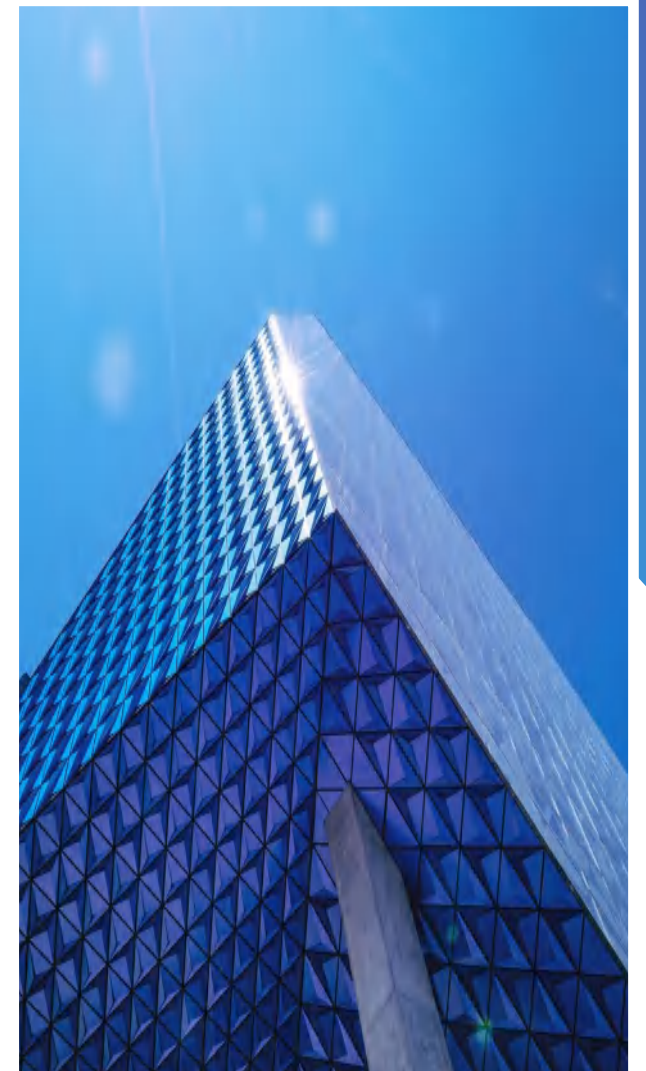
**Contact: Robin Wang**

**Skype/WhatsApp/WeChat: +86 173 0445 8527**

**Phone: +86 173 0445 8527**

**E-mail: [robin@alitermz.com](mailto:robin@alitermz.com)**

**Website: [www.alitermz.com](http://www.alitermz.com)**



Shenzhen Maizhan Technology Co., Ltd. is a research and development, production, sales in one of the wholly-owned enterprises, founded in 2015, there is a production base in Shenzhen, covering an area of 1500 square meters.

We are specializing in the wireless charger and smart phone peripheral accessories.

The company has been committed to the application and innovation of mobile phone peripheral products such as wireless chargers, focusing on customer communication and cooperation and providing the most personalized products for the global market.

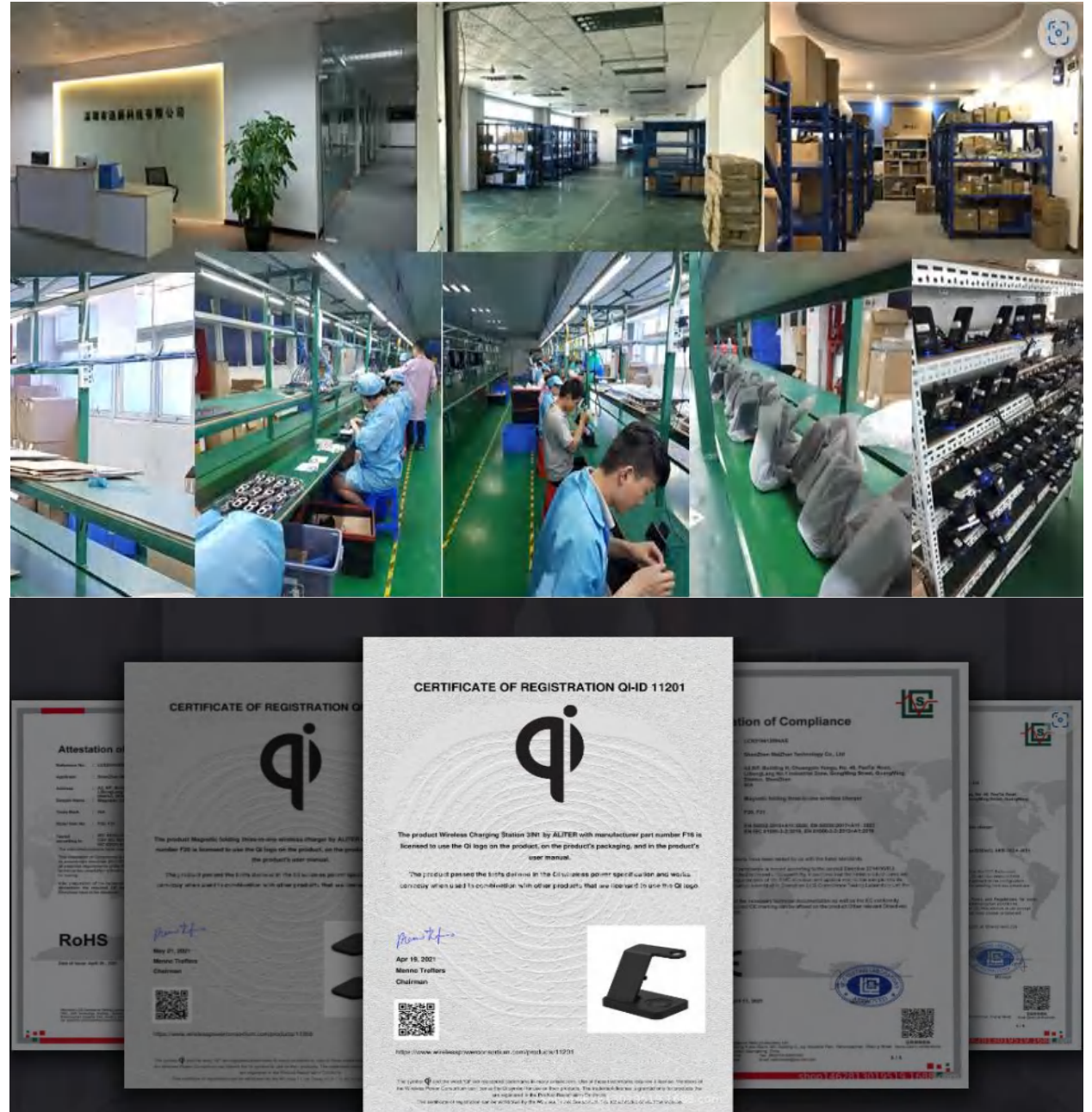
Since every customer would have different requirement, our professional sales team will always listen to you fully and do our best to offer the available solution of complete of production combination to suit with the local markets requirements.

Our major clients are chains stores/supermarket/importers/promotion customers/branding customers. We have won great reputations from customers by providing high quality products at competitive prices, strict quality control and fast lead time in the global marketplace.

We have good engineering product design, in-house artwork designer team and good insight of the trend of consumer electronics. Our mold toolings are designed by ourselves. This guarantees the uniqueness of our products.

All products meet the RoHS requirement and were certified by Qi, CE, FCC, UL, SAA, BS, PSE, etc.

We look forward to working with you from the world to develop long-term mutually beneficial and win-win partnership at your end markets!





# WIRELESS CHARGER CONTENTS

## 1. Foldable Wireless Charger

1.1 F22-----	01
1.2 F20P-----	02
1.3 F20S-----	03

## 2. Desktop wireless charger

2.1 F17-----	01
2.2 F16-----	02
2.3 F15-----	03
2.4 F11Pro-----	04
2.5 F11-----	05

## 3. Car wireless charger

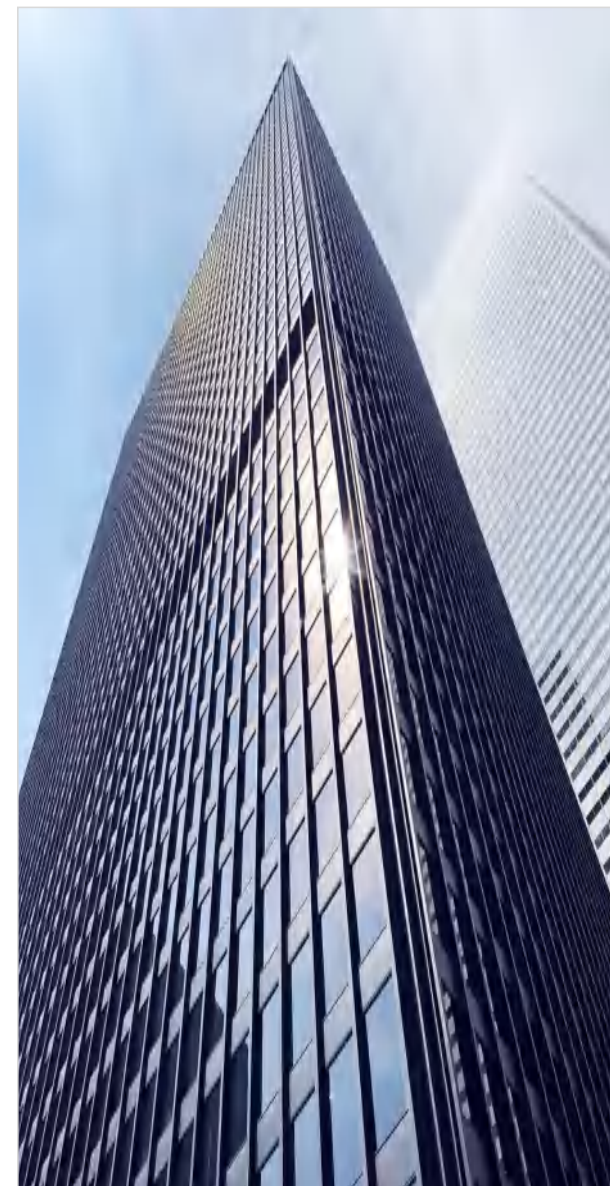
3.1-EP08G-----	01
3.2 EP08-----	02
3.3 EP05F-----	03
3.4 EP02F-----	04
3.5 EP01F-----	05

## 4. Wireless charger pencil box

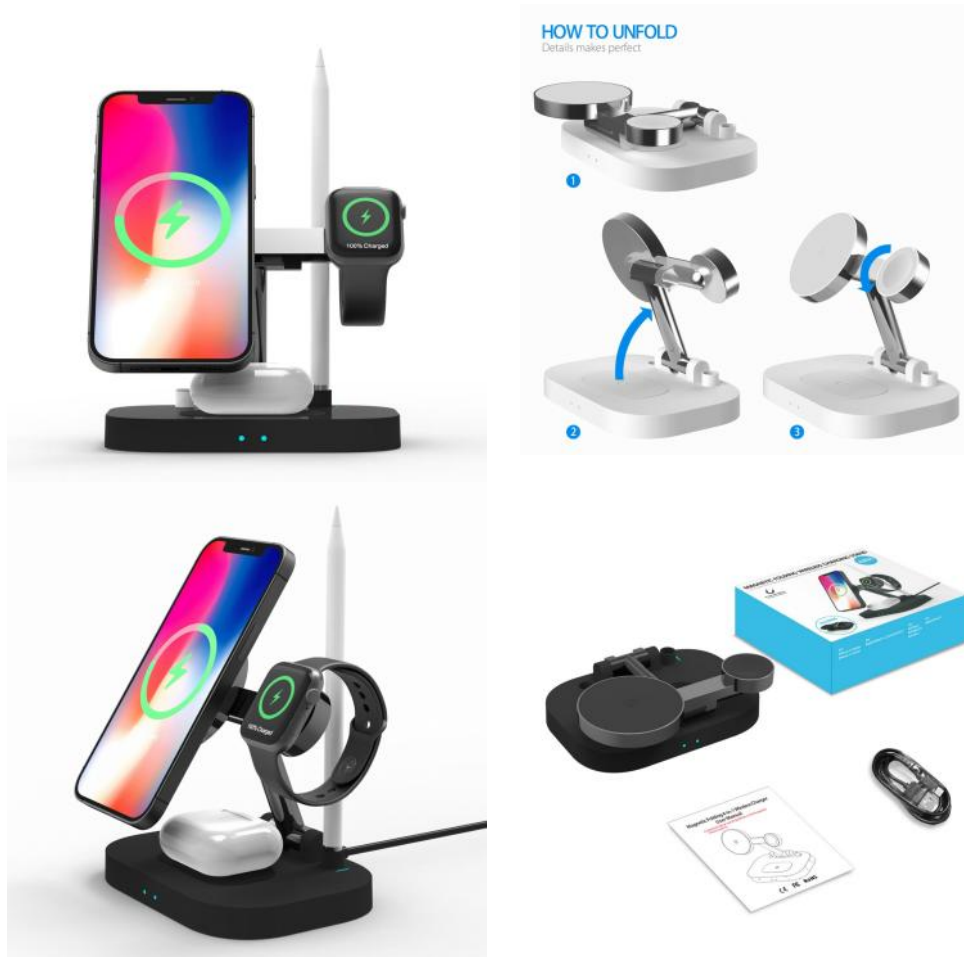
4.1 P2-----	01
4.2 P1-----	02

## 5. Customize wireless charger

5.1 MZ-HY001-----	01
5.2 MZ-X455-----	02
5.3 MZ-HY020-----	03
5.4 MZ-J864-----	04
5.5 MZ-H011-----	05
5.6 MZ-X366-----	06



## 4-in-1 Foldable Wireless Charger Dock Model: F22



**Function:** wireless charging

Input: 12V/2A ; 9V/ 2A;5V/3A

Output : Qi Phone:15w/ 10w/7.5w/5w; Apple watch:3w;

TWS:5w/3w ;Apple pencil:1w

Efficiency: over73%

Charging port: Type-c

Charging distance:  $\leq 4\text{mm}$

Material: PC+ABS +Metal

Color: Black/white

Certification: Qi,CE,RoHS,FCC,PSE,METI

**Packaging:**

Product size: open 131.5\*110.5\*40mm

Package size:153\*134\*47mm

Product weight: 186g

Carton size: 475\*398\*286mm

QTY/CTN: 50PCS

G.W.: 16.5KG

## 3-in-1 Foldable Wireless Charger

**Model: F20P**

**Function: wireless charging**

Input: 12V/2A ; 9V/ 2A;5V/3A

Output : Qi Phone:15w/ 10w/7.5w/5w; Apple watch:3w; TWS:5W/3W

Efficiency: over73%

Charging port: Type-c

Charging distance:  $\leq 4\text{mm}$

Material: PC+ABS

Color: Black/white

Certification: Qi,CE,RoHS,FCC,PSE,METI

**Packaging:**

Product size: open 182\*115\*10mm fold:88.5\*115\*24.5mm

Package size:187\*155\*137mm

Product weight: 1 8 6 g

Carton size: 398\*290\*288mm

QTY/CTN: 50PCS

G.W.: 9.7KG

Magnetic Folding 3-in-1 Wireless Charger

For iPhone 8 and above+Apple Watch Series+AirPods 2 and above



Works with built-in magnetic module



Works with built-in magnetic module



GET PORTABLE APPLE DEVICES 100% CHARGED



APPLE DEVICES ORGANIZED  
• Classic Collection  
• Easily Take or Put



## 3-in-1 Foldable Wireless Charger

**Model: F20S**

**Function: wireless charging**

Input: 12V/2A ; 9V/ 2A;5V/3A

Output : Qi Phone:15w/ 10w/7.5w/5w; Apple watch:3w; TWS:5W/3W

Efficiency: over73%

Charging port: Type-c

Charging distance:  $\leq 4\text{mm}$

Material: PC+ABS

Color: Black/white

Certification: Qi,CE,RoHS,FCC,PSE,METI

**Packaging:**

Product size: open 178\*116\*10.5mm fold:86\*116\*21mm

Package size:187\*155\*137mm

Product weight: 186g

Carton size: 398\*290\*288mm

QTY/CTN: 50PCS

G.W.: 9.7KG





## 3-in-1 Wireless Charger Dock for Samsung Model: F17

**Function:** wireless charging

Input: 12V/2A ; 9V/ 2A;5V/3A

Output : 7.5W for:iPhone14 series, iPhone13 series,iPhone12 series,iPhone11series,iPhone8 iPhone8 plus,iPhone X,iPhone XS,XR,XS Max

15W/10W for:Sumsung Note20/10,S22,S10,S10+,Note9,S23,S22,S21,S10,S9,S9+,Note8,Galaxy S8,S8+,Galaxy S7,Galaxy S7 edge,Galaxy S6 edge+,Galaxy Note 5,Note FE

3W: Galaxy Buds,Galaxy Buds+, Galaxy Buds 2

Efficiency: over73%

Charging port: Type-c

Charging distance:  $\leq 4\text{mm}$

Material: PC+ABS

Color: Black

Certification: CE,RoHS,FCC

**Packaging:**

Product size: 150\*105\*125mm

Package size:187\*155\*137mm

Product weight: 330 g

Carton size: 585\*380\*485mm

QTY/CTN: 48PCS

G.W.: 16.8KG



## 5-in-1 Apple Wireless Charger Dock

**Model: F16**

**Function: wireless charging**

Input: 12V/2A ; 9V/ 2A;5V/3A

Output : Qi Phone:15w/ 10w/7.5w/5w; Apple watch:3w; TWS:5W/3W

Efficiency: over73%

Charging port: Type-c

Charging distance:  $\leq 4\text{mm}$

Material: PC+ABS

Color: Black

Certification: Qi,CE,RoHS,FCC,PSE,METI

**Packaging:**

Product size: 150\*105\*125mm

Package size:187\*155\*137mm

Product weight: 330g

Carton size: 585\*380\*485mm

QTY/CTN: 48PCS

G.W.: 19.6KG

Wireless Charging Station  
Qi Phone+Galaxy/Watch+AirPod 2/2/Pro/Pro2/Buds

5IN1



Apple User



Case-Friendly





## 3-in-1 Apple Wireless Charger Dock

**Model: F15**

**Function: wireless charging**

Input: 12V/2A ; 9V/ 2A;5V/3A USB:5V/1A

Output : Qi Phone:15w/ 10w/7.5w/5w; Apple watch:3w

Efficiency: over73%

Charging port: Type-c

Charging distance:  $\leq 4\text{mm}$

Material: PC+ABS

Color: Black

Certification: Qi,CE,RoHS,FCC,UL,PSE

**Packaging:**

Product size: 150\*105\*125mm

Package size:187\*155\*137mm

Product weight: 338g

Carton size: 585\*380\*485mm

QTY/CTN: 48PCS

G.W.: 19.6KG



## 3-in-1 Wireless Charging Dock

**Model: F11 pro**

**Function: wireless charging**

Input: 12V/2A ; 9V/ 2A;5V/3A

Output : Qi Phone:15w/ 10w/7.5w/5w; Apple watch:3w

Efficiency: over75%

Charging port: Type-c

Charging distance:  $\leq 4\text{mm}$

Material: PC+ABS

Color: Black

Certification: Qi,CE,RoHS,FCC,UL,PSE

**Packaging:**

Product size: 140\*121\*105MM

Package size:145\*125\*135MM

Product weight: 267g

Carton size: 520\*420\*315mm

QTY/CTN: 48PCS

G.W.: 16.6KG



## 2-in-1 Wireless Charger Dock

### Model: F11

**Function: wireless charging**

Input: 12V/2A ; 9V/ 2A;5V/3A

Output : Qi Phone:15w/ 10w/7.5w/5w; Apple watch:3w

Efficiency: over75%

Charging port: Micro USB5pin port

Charging distance:  $\leq 4\text{mm}$

Material: PC+ABS

Color: Black

Certification: Qi,CE,RoHS,FCC,UL,PSE

**Packaging:**

Product size: 140\*121\*105MM

Package size:145\*125\*135MM

Product weight: 267g

Carton size: 520\*420\*315CM

QTY/CTN: 48PCS

G.W.: 19.6KG



Horizontal or Vertical  
Charge Your Phone in Either Portrait or Landscape Position



The transition of the led

When iPhone X or X plus is wireless charging,The led is Blue.  
When the charge is completed,The led also is Blue.



When only Apple Watch is wireless charging,The led is not bright.

When Samsung S8/S7/S6, Nexus6P is wireless charging,The led is Blue.  
When the charge is completed,The led turns Green.





## Wireless Charger Mat

**Model: F10**

**Function: smart phone wireless charger mat**

Input: 9V/1.67A ; 5V/ 2A

Out put power: 10W/7.5W/ 5W

Efficiency:over 75%

Charging port: Micro USB5pin port

Charging distance:  $\leq 8\text{mm}$

Material: PC+ABS

Color: black

Certification: Qi,CE, RoHS, FCC

**Packaging:**

Product size: 97\*97\*8.5MM

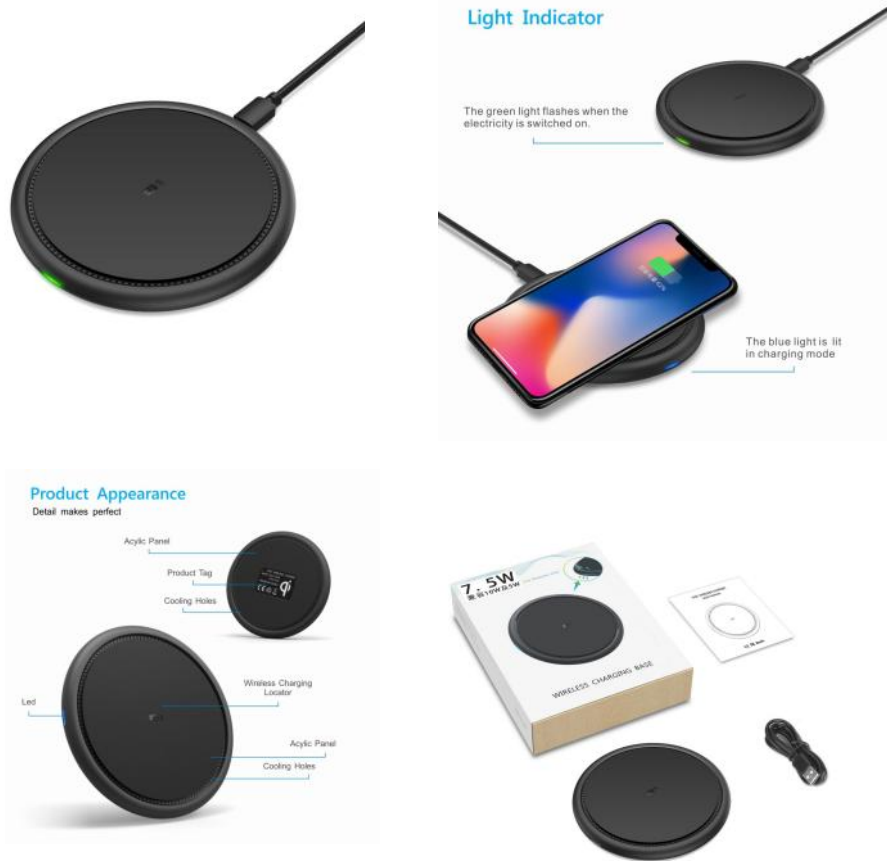
Package size:150\*115\*30MM

Product weight: 8 2 g

Carton size: 50\*40\*40CM

QTY/CTN: 130PCS

G.W.: 20.8KG



## PU Leather Wireless Charger Round Pad Model: MZ-WP12



Material: PU Leather

Input: DC5V/2A; 9V/2A

Output: DC5V/ 1A; 9V/ 1.2A

Mobile phone output: 5W/7.5W/ 10W/ 15W (max)

Transmission distance:  $\leq 6$  MM

Charging efficiency:  $\geq 76\%$

Colour: Black, Gray, Brown or custom

### Packaging:

Product size: 100\*6MM

Package size: 120\*120\*18MM

Product weight: 125g

Carton size: 38\*36\*27.5CM

QTY/Carton: 120pcs

G.W.: 16kg

# Car Wireless Charger

## Magnetic Wireless Car Charger

### Model: EP08G



**Function: wireless charging**

Input: 9V/3A ; 9V/ 2A;5V/3A

Output : Qi Phone:15w/ 10w/7.5w/5w;

Efficiency: over73%

Charging port: Type-c

Charging distance:  $\leq 4\text{mm}$

Material: PC+ABS

Color: Black

Certification: CE,RoHS,FCC,UL

**Packaging:**

Product size: open 104\*63\*86mm

Package size:140\*70\*65mm

Product weight: 155g

Carton size: 370\*345\*296mm

QTY/CTN: 50PCS

G.W.: 8.8KG





# Car Wireless Charger

## Magnetic Wireless Car Charger

### Model: EP08

**Function:** wireless charging

Input: 9V/3A ; 9V/ 2A;5V/3A

Output : Qi Phone:15w/ 10w/7.5w/5w;

Efficiency: over73%

Charging port: Type-c

Charging distance:  $\leq 4\text{mm}$

Material: PC+ABS +Metal

Color: Black

Certification: Qi,CE,RoHS,FCC, ICES, UL

**Packaging:**

Product size: open 104\*63\*86mm

Package size:140\*70\*65mm

Product weight: 155 g

Carton size: 475\*398\*286mm

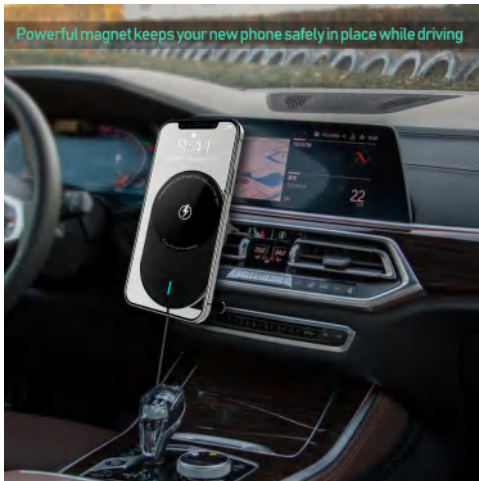
QTY/CTN: 50PCS

G.W.: 8.2KG

Magnetic Car Fast Wireless Charger



Powerful magnet keeps your new phone safely in place while driving



# Car Wireless Charger

## Automatic Clamping Smart Sensor Car Wireless Charger

### Model: EP05

#### Function: wireless charging

Input: 9V/1.67 or 5V/2A

Output : 10w/7.5w/5w;

Efficiency: over73%

Charging port: Type-c

Charging distance:  $\leq 8\text{mm}$

Material: Plastic+ silicone

Color: Black

Certification: CE,RoHS,FCC

#### Packaging:

Product size: 75\*118\*55mm

Package size: 115\*140\*96mm

Product weight: 358g

Carton size: 500\*400\*400mm

QTY/CTN: 75PCS

G.W.: 27KG



# Car Wireless Charger

## Automatic Clamping Smart Sensor Car Wireless Charger

### Model: EP02F

#### TWO MODELS

1. Fast Charge Model(Output 9V/1.2A, 10.8W max) for Galaxy S8, S8+, S7/S7 edge, S6 edge plus and Note5
2. Standard Charge Model(Output 5V/1A, 5W max) for Standard Qi enabled device like S6, S6 edge ect.

FAST CHARGE  
10.8W



Fast Car Charger  
• Model: CC02  
INPUT: DC 12-24V  
OUTPUT: 9.0V-1.67A  
5.0V-2.1A



#### Function: wireless charging

Input: 9V/1.67 or 5V/2A

Output : 10.8w/5w;

Efficiency: over75%

Charging port: Type-c

Charging distance: ≤ 8mm

Material: Plastic

Color: Black

Certification: CE,RoHS,FCC

#### Packaging:

Product size: 115\*70\*137mm

Package size:91\*83\*112mm

Product weight: 189g

Carton size: 500\*400\*400mm

QTY/CTN: 50PCS

G.W.: 9.6KG



## Automatic Clamping Smart Sensor Car Wireless Charger Model: EP01F

**FAST CHARGE**

10.8W



**TWO MODELS**

1. Fast Charge Mode(Output: 9V/1.2A, 10.8W max) for Galaxy S6, S6e, S7, S7 edge, S8 edge plus and Note8.  
2. Standard Charge Mode(Output: 5V/1A, 5W max) for Standard Qi-enabled device like S6, S6 edge ect.



Fast Car Charger  
• Model: CC02  
INPUT: DC 12-24V  
OUTPUT: 9.0V-1.67A  
5.0V-2.1A



**Function: wireless charging**

Input: 9V/1.67 or 5V/2A

Output : 10.8w/5w;

Efficiency: over75%

Charging port: Type-c

Charging distance: ≤ 8mm

Material: Plastic

Color: Black

Certification: CE,RoHS,FCC

**Packaging:**

Product size: 75\*155\*55mm

Package size:98\*175\*74mm

Product weight: 269g

Carton size: 300\*265\*280mm

QTY/CTN: 50PCS

G.W.: 13.5KG

# Car Wireless Charger

## Automatic Clamping Smart Sensor Car Wireless Charger

### Model: MZ-X345



Material: Plastic + PCB

Feature: Infrared automatic sensing opens and locks, and touch to open.

Input: 9V-2A/ 12V- 1.5A

Power : 5W/7.5W/ 10W/ 15W

Output Port : USB- C

Transmission distance:  $\leq 6$  mm

Charging efficiency:  $\geq 73$  %

Color: Black

#### Packaging:

Product size: 119\*69\*18MM

Package size: 136\*108\*89MM

Product weight: 358g

Carton size: 42\*33.5\*36.5CM

QTY/Carton: 36pcs

G.W.: 14kg

# Car Wireless Charger

## Automatic Clamping Smart Sensor Car Wireless Charger

### Model: MZ-V8

Material: Aluminum alloy + PCB

Features:

- 1) 15 W Compatible with 10 w / 7.5 w / 5 w.
- 2) Air outlet bracket; All metal shell, mirror design
- 3) The infrared automatic sensing opens and locks, the left side and lower part touch open.

Built in super capacitor, which can be opened after flameout

Input: 5V/3A, 9V/2A, 12V/ 1.5A

Power : 5W/7.5W/ 10W/ 15W

Output Port : USB-C

Transmission distance:  $\leq 6$  mm

Charging efficiency:  $\geq 73\%$

Color: White/Black

**Packaging:**

Product size: 102\*99\*93MM

Package size: 197\*107\*52MM

Product weight: 260g

Carton size: 56\*45\*32CM

QTY/Carton: 48pcs

G.W.: 13.5kg



## 2 in1 Wireless Charging Pencil-Box Battery Model: P2



Material: PC+ABS

Compatible: Apple pencil 1st Gen and 2nd Gen.

Input: 5V/1A

Power : Apple Pencil 1: 1W; Apple Pencil 2: 1.5W

Output Port : Type-C

Charging efficiency:  $\geq 73\%$

Battery capacity: 570mAh/3.85Vdc/2.194Wh

Color: White/Black

### Packaging:

Product size: 204\*36\*21mm

Package size: 222\*53\*26mm

Product weight: 115g

Carton size: 450\*260\*270mm

QTY/Carton: 100pcs

G.W.: 12kg



## 2 in1 Wireless Charging Pencil-Box Model: P1

Material: PC+ABS

Compatible: Apple pencil 1st Gen and 2nd Gen.

Input: 5V/1A

Power : Apple Pencil 1: 1W; Apple Pencil 2: 1.5W

Output Port : Type-C

Charging efficiency:  $\geq 73\%$

Color: White/Black

### Packaging:

Product size: 204\*36\*21mm

Package size: 222\*53\*26mm

Product weight: 104g

Carton size: 450\*260\*270mm

QTY/Carton: 100pcs

G.W.: 10.6kg



# Other customized wireless charger

## Magnetic with Holder Wireless Charger

### Model: MZ-HY001

Input: 9V/2A;12/2A

Output: 5W/7.5W/ 10W/ 15W(MAX)

Color: Black/ White

Charging distance: 4 - 8 mm

Efficiency:  $\geq 73\%$

### Packaging:

Product size:  $\phi 64 * 7.2 \text{MM}$

Product weight: 60 g

Carton size: 54\*28\*23.3CM

QTY/CTN: 100pcs

G.W.: 9KG



# Other customized wireless charger

## 3in1 Floding Wireless Charger

### Model: MZ-X455



Function: Support mobilephone/ Applewatch/ Bluetooth headset wireless charging

Input:  $\geq 9V/4A$ ,  $12V/2.5A$

Output: 15 W/ 10 W/ 7.5 W/ 5 W (mobile phone)

Output: 3 W (iWatch)

Output: 2 W (TWS Bluetooth headset) · Adaptor:  $\geq 9 V/ 4 A$

Compatibility: Support Qi compatible devices

Product Material : PCB+ ABS+ Acrylic

Product Color: Black/ White

#### Packaging:

Product size: 165\*141.3\*13MM

Package size: 186\*50\*165MM

Product weight: 172.5g

Carton size: 39\*23\*37CM

QTY/Carton: 40pcs

G.W.: 11.5kg

# Other customized wireless charger

## 3 in 1 Folding Portable Wireless Charger Model: MZ-HY020



Input : 9V/2A 12/2A  
Wireless Output 15W/ 10W/7.5W/5W  
Charging distance 4-8mm  
Material ABS  
Airpod output 3W  
Apple watch output 2.5W  
USB Output 5V/ 0.8- 1A  
Color : Black/White  
Accessories: Type C cable ( 1 meter)  
Custom color box package with inner card tray

**Packaging:**  
Product size: 26 \* 82 \* 81MM  
Package size: 140 \* 110 \* 35MM  
Product weight: 163g  
Carton size: 89 \* 30 \* 24CM  
QTY/Carton: 100pcs  
G.W.:17.8kg



# Other customized wireless charger

## 6 in 1 Wireless Charging Dock

### Model: MZ-J864



Input Current:  $\geq 9V-2A$ ;  $5V-3A$

Output: 5W/7.5W/ 10W/ 15W(MAX)

Material: PCB+ ABS+ PPMirror surface+ aluminium alloy+ Silicone

Frequency: 110-205KHz

Charging Distance: 3-6mm Charging

Efficiency: 78%

Color: black/white



### Packaging:

Product size: 112\*69MM

Package size: 123\*82\*49MM

Product weight: 248g (Double chargers: 263g)

Carton size: 41.5\*27\*23CM

QTY/Carton: 40pcs

G.W.: 12.3kg

## 3 in 1 Alarm clock wireless charger

**Model: MZ-H011**



Material: ABS +PBC

Input voltage: QC3.0 30 W or more

Phone output: 5 W/7.5 W/ 10 W15 W (max)

AirPods output: 3 W

iWatch output : 2.5W

Display screen

Transmission distance:  $\leq 6$  MM

Charging efficiency:  $\geq 78$  %.

Color: black, white

### Packaging:

Product size: 156\*40\*120MM

Package size: 160\*90\*60MM

Product weight: 300g

Carton size: 56\*45\*32CM

QTY/Carton: 40pcs

G.W.: 14.6kg



# Other customized wireless charger

## Automatic Clamping Smart Sensor Car Wireless Charger

**Model: MZ-X366**

Material: Plastic + PCB

Feature: The infrared automatic sensing opens the lock and the right touch opens it.

Input: 9V-2A/ 12V- 1.5A

Power : 5W/7.5W/ 10W/15W

Output Port: Type- C

Transmission distance:  $\leq 6$  mm

Charging efficiency:  $\geq 73$  %

Color: Black

### Packaging:

Product size: 113.5\*65\*16.5MM

Package size: 181\*100\*139MM

Product weight: 370g

Carton size: 56\*41\*43CM

QTY/ Carton: 36pcs

G.W.: 14.5kg



## Qi Magnetic Wireless Car Charger Model: MZ-HSX6

Material: Aluminum alloy + Acrylic + PCB+Magnetic

Features: magnetic wireless charger

Input: 5V/3A, 9V/2A, 12V/ 1.5A

Power : 5W/7.5W/ 10W/ 15W

Output Port : USB

Transmission distance:  $\leq 6$  mm

Charging efficiency:  $\geq 73$  %

Color: Black



### Packaging:

Product size: 55\*82.5\*8MM

Package size: 111.5\*107\*41.5MM

Product weight: 115g

Carton size: 46\*44\*22CM

QTY/Carton: 80pcs

G.W.: 10.5kg



# Other customized wireless charger

## Wireless Charger Humidifier

### Model: MZ-WX01

Material: ABS+PCB board

Input: DC5V/2A; 9V/2A

Output: DC5V/1A; 9V/1.2A

Logo available

Double coil

Mobile phone output: 5W/7.5W/10W(max)

Transmission distance:  $\leq 6$  MM

Charging efficiency:  $\geq 76\%$

Water capacity: 380 ML

Spray time: 6 hours (Max)

Colour: White

#### Packaging:

Product size: 180\*120.5\*80MM

Package size: 190\*130\*90MM

Product weight: 420g

Carton size: 54\*42\*30CM

QTY/Carton: 24pcs

G.W.: 10.9kg



# Other customized wireless charger



CUSTOM LOGO

## Natural Rubber Mousepad with Wireless Charger Model: MZ-WP01

Material: PU+ Natural rubber+ Waterproof fabrics

Features:

- 1) 15 W wireless charger ,compatible with 10 W / 7.5 W/ 5 W
- 2) Waterproof function
- 3) Non-slip rubber base design
- 4) Tightly stitched edge
- 5) 100% made of natural rubber, the mouse pad has no odor

Input: DC 5V/2A, 9V/2A , 12V/ 1.5A

Port: Type C

Output: 5W/7.5W/ 10W/ 15W

Transmission distance:  $\leq 6$  mm

Charging efficiency:  $\geq 73\%$

Color: Black or custom design

**Packaging:**

Product size: 800\*300\*4MM

Package size: 315\*130\*70MM

Product weight: 680g

Carton size: 55\*35\*36.5CM

QTY/Carton: 16pcs

G.W.: 13kg



## PU Leather Folded Wireless Charger Mousepad

### Model: MZ-WP11

Material: PU Leather

Input: DC5V/2A; 9V/2A

Output: DC5V/ 1A; 9V/ 1.2A

Light bright Logo

Mobile phone output: 5W/7.5W/ 10W/ 15W (max)

Transmission distance:  $\leq 6$  MM

Charging efficiency:  $\geq 76\%$

Colour: Black or custom



### Packaging:

Product size: 30\*22MM

Package size: 283\*110\*25MM

Product weight: 289g

Carton size: 66\*28\*24CM

QTY/Carton: 50pcs

G.W.: 15kg

# Other customized wireless charger

## PU Leather Wireless Charger Notebook Model: MZ-NB01



Material: PU Leather

Input: DC5V/2A; 9V/2A

Output: DC5V/ 1A; 9V/ 1.2A

Light printing Logo

Mobile phone output: 5W/7.5W/ 10W/ 15W (max)

Transmission distance:  $\leq 6$  MM

Charging efficiency:  $\geq 76\%$

Colour: Black, Grey, Blue or custom

### Packaging:

Product size: 220\*165\*15MM

Package size: 265\*184\*23MM

Product weight: 420g

Carton size: 39\*38\*29CM

QTY/Carton: 30pcs

G.W.: 14.55kg



# Other customized wireless charger

## RGB large Mousepad with Wireless Charger Model: MZ-WP06



Color: Black  
Material: Natural rubber+ multispanDEX  
Product size: 800\*300\*9mm  
Product weight: 695g  
Power: 10W, Compatible with 7.5W, 5W  
Port: Micro port  
Input: DC5V/2A; 9V/2A  
Output: DC5V/1A; 9V/1.2A

Accessories: 1.5m black micro usb cable



**Packaging:**  
Product size: 800\*300\*9MM  
Package size: 315\*130\*70MM  
Product weight: 680g  
Carton size: 45\*35\*29CM  
QTY/Carton: 10pcs  
G.W.: 10kg

# Other customized wireless charger



MZ-A001



MZ-H15



MZ-76



MZ-83



MZ-J864



MZ-J978

# Other customized wireless charger



MZ-G605



MZ-HY011



MZ-SZ01



MZ-A06



MZ-N65



MZ-N61

# Other customized wireless charger



MZ-T36



MZ-D5



MZ-N62



MZ-N51



MZ-J864

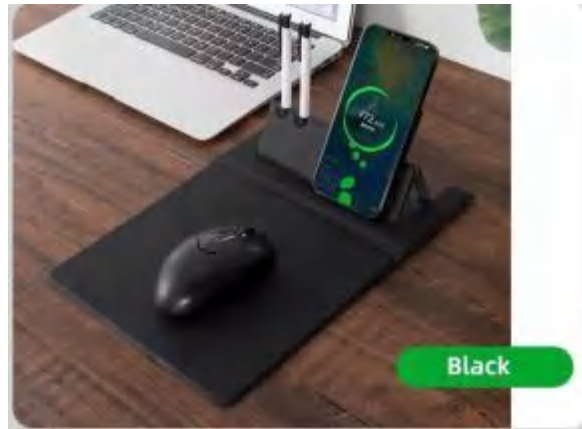


MZ-X263

# Other customized wireless charger



MZ-WP12



MZ-WP13



MZ-WP14



MZ-N60



MZ-N38



MZ-N67



# Other customized wireless charger



MZ-T12



MZ-T9



MZ-T7



MZ-T13



MZ-CH02



ShenZhen Maizhan Technology Co., Ltd.  
Focused Wireless Charging

More detail

 [www.alitermz.com](http://www.alitermz.com)

**Robin Wang (Sales Manager)**  
**Shenzhen Maizhan Technology Co., Ltd.**

**Skype: +8617304458527**

**WhatsApp: +8617304458527**

**Tel: +8617304458527**

**E-mail: [robin@alitermz.com](mailto:robin@alitermz.com)**



END